

CONTENTS

Screen Display Guide

Main Screen Features

Power Distribution

AI Battery Temperature Control

Pomodoro Timer

Bluetooth Connection

Anker App Settings

Charging Mode

Screen Settings

Screen Brightness

Pomodoro Timer

Device Language

Charging Your Devices

Recharging the Power Bank

Simultaneous Charging and Recharging

In-App Combination of Charging Base and Power Banks

Trickle Charging Mode

Other Screen Displays

FAQ

Questions About the App

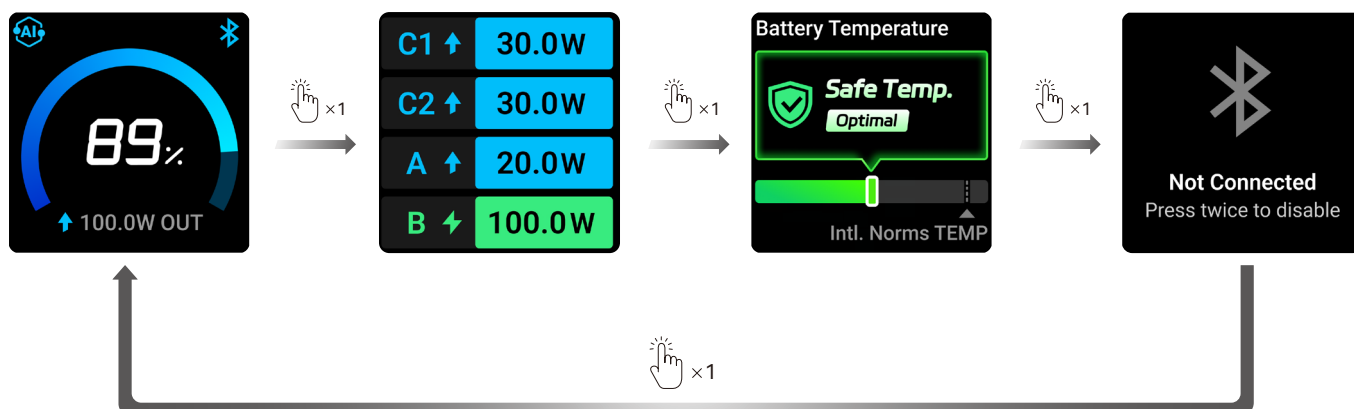
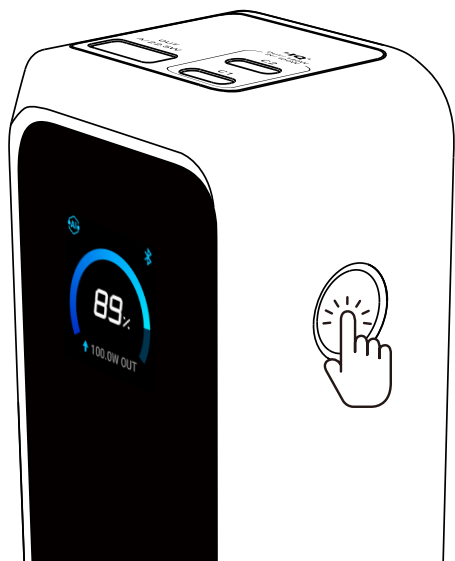
Questions About Charging and Recharging

Other Questions

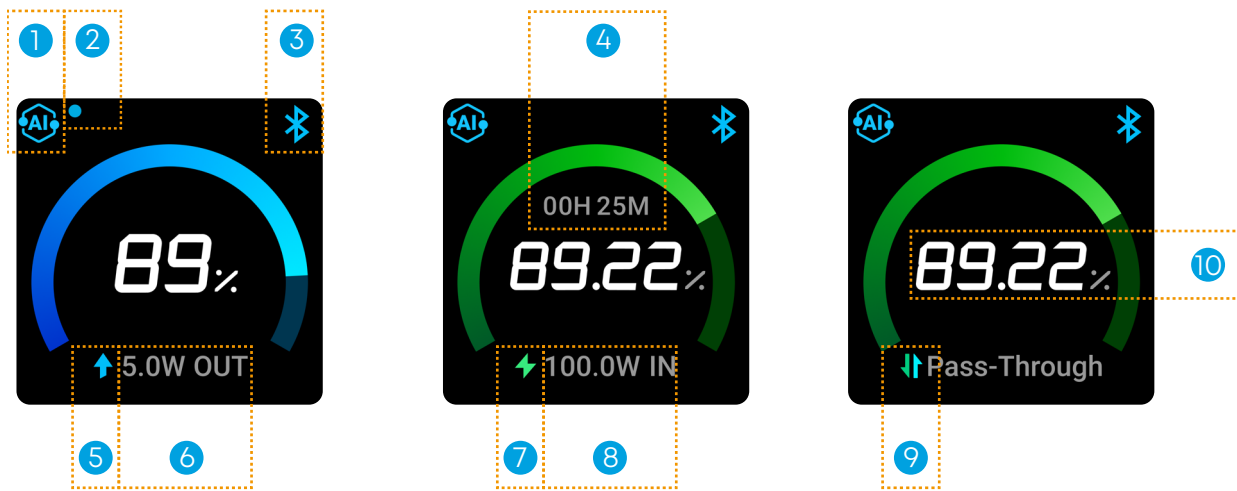
Specifications

Screen Display Guide







- Press the power button once to activate the screen or switch between pages.
- The screen stays on while the power bank is charging or recharging. If the power bank is not in use, the screen turns off after 30 seconds. To turn off the screen manually, press and hold the power button for 2 seconds. You can also change the screen timeout duration and enable a clock screensaver in the Anker app after pairing via Bluetooth.
- Press and hold the button for 7 seconds to reset the Bluetooth connection.
- To charge low-power devices like earbuds or handheld fans via the USB-A port, press the power button twice on the main screen to activate Trickle Charging Mode.



Main Screen Features



- ① Charging Mode
- ② Blue Dot: Trickle Charging Mode
- ③ Bluetooth Status
- ④ Time to Full Recharge
- ⑤ Blue Arrow: Charging / Output
- ⑥ Total Output Power
- ⑦ Green Lightning: Recharging / Input
- ⑧ Total Input Power
- ⑨ Double Sided Arrows: Simultaneous Charging and Recharging / Pass-Through Charging
- ⑩ Remaining Battery Percentage

 A  B  C	<p>The Charging Mode icon changes based on the mode you select in the Anker app:</p> <ul style="list-style-type: none"> A: Smart Dynamic Allocation B: Power Saving Mode C: Custom Mode
 A  B  C	<p>The Bluetooth icon shows the following states:</p> <ul style="list-style-type: none"> A: Bluetooth Is Connected B: Bluetooth Is Not Connected C: Bluetooth Is Turned Off

Power Distribution

The screen displays real-time power distribution per port during charging.

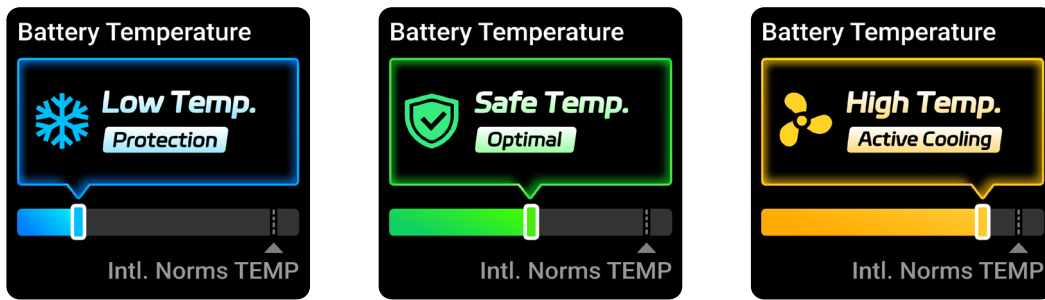
Note: "B" refers to the charging base. This appears when the power bank is recharged via:

- Anker 100W Charging Base—Model A1902
- Anker Prime Charging Base (150W, 3 Ports)—Model A1903

C1 ↑	30.0W
C2 ↑	30.0W
A ↑	20.0W
B ↻	100.0W

AI Battery Temperature Control

The power bank monitors internal temperature to ensure safety. If the temperature is too high or too low, certain functions will be disabled until the temperature normalizes.

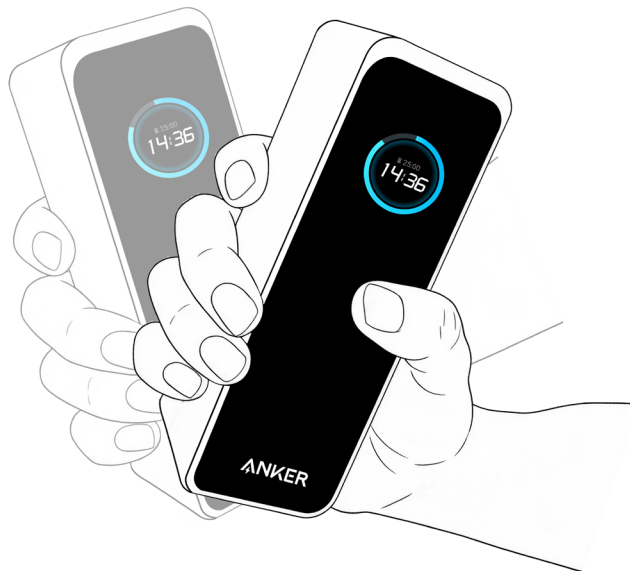


Pomodoro Timer

The Pomodoro Technique is a time management method which involves 25 minutes of focused work followed by a 5-minute break. Each cycle is called a “pomodoro.”

To activate the timer, turn on the screen, and swing the power bank side to side four times (hold the power bank firmly to avoid dropping it). A 25-minute countdown will start. The screen will flash when time is up.

Press the power button once to cancel the timer. You can change the countdown time or turn off the timer in the Anker app after Bluetooth pairing.



Additional screen displays are listed at the end of this user guide.

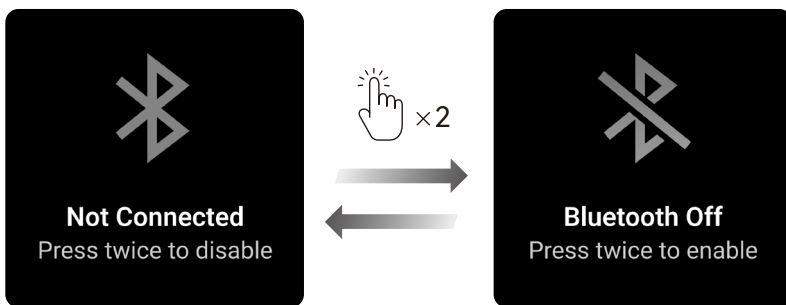
Bluetooth Connection

1. Download the Anker app:

<https://www.anker.com/app-download>



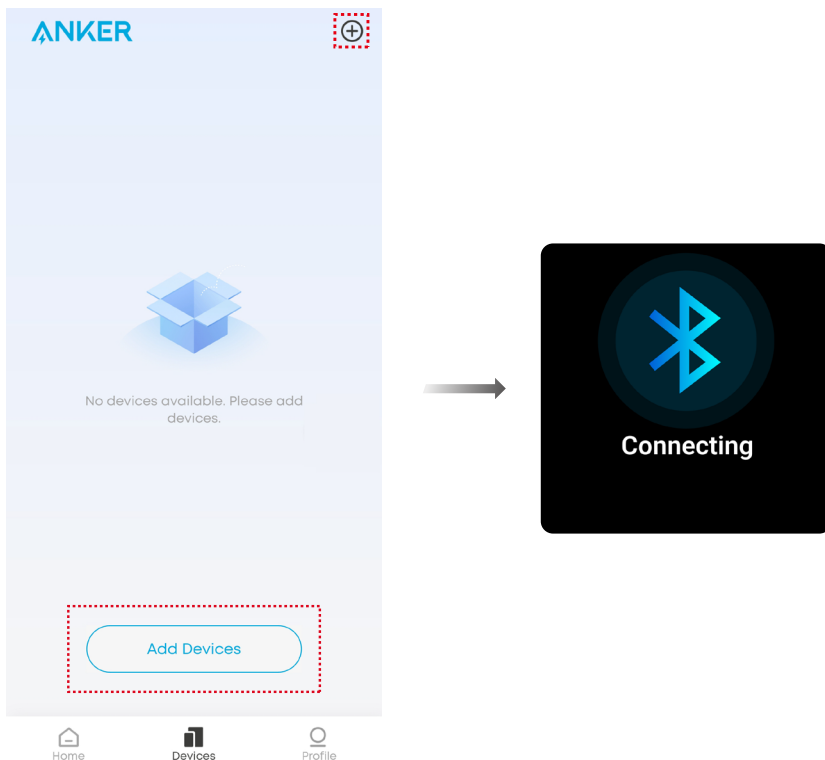
2. Press the power button twice to turn Bluetooth on or off. Make sure your phone's Bluetooth is enabled and keep the power bank within 33 ft (10 m).



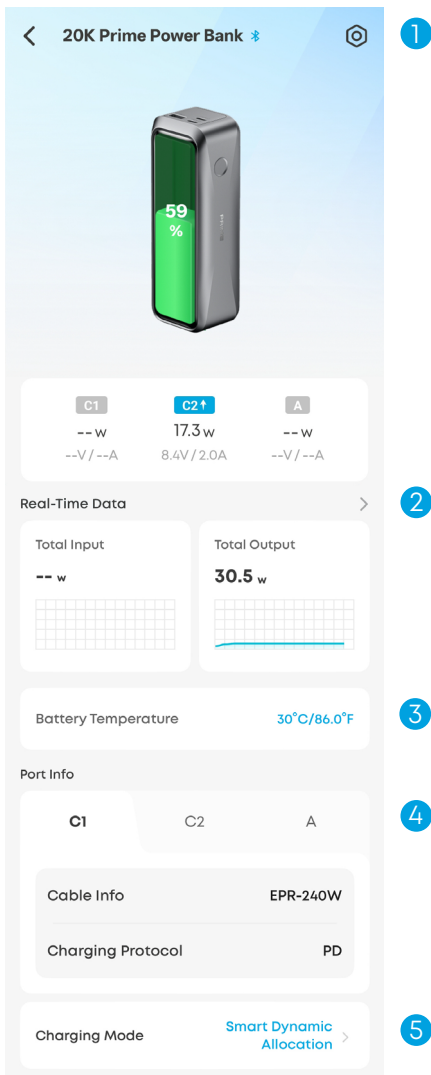
3. Open the app, and tap the "+" icon in the top-right corner or select "Add Devices" at the bottom of the Devices page. Follow the in-app instructions to complete the connection setup.

If pairing fails, check:

- The power bank is turned on and working normally
- Bluetooth is turned on
- The power bank is near your phone



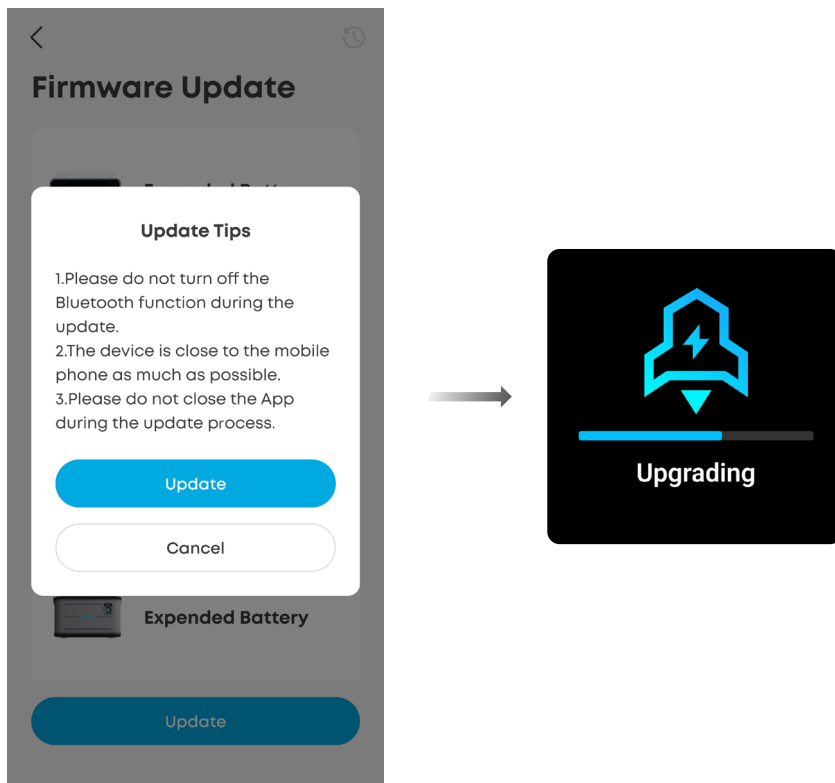
4. After successful pairing, you can check the real-time data and modify detailed settings.



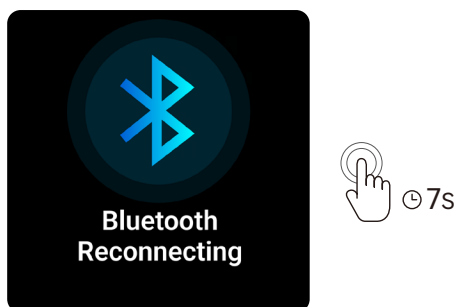
- ① Settings
- ② Real-Time Charging Data
- ③ Battery Temperature
- ④ Cable and Protocol Information (Cable Information Is Not Displayed During Input)
- ⑤ Charging Modes

5. If a software or firmware update is available, update it through the app. The following conditions must be met for a successful update:

- Ensure the power bank has more than 30% remaining power.
- Do not turn off Bluetooth, charge other devices or recharge the power bank during the update process.
- Ensure stable network connection and keep the Anker app open until the update is complete.

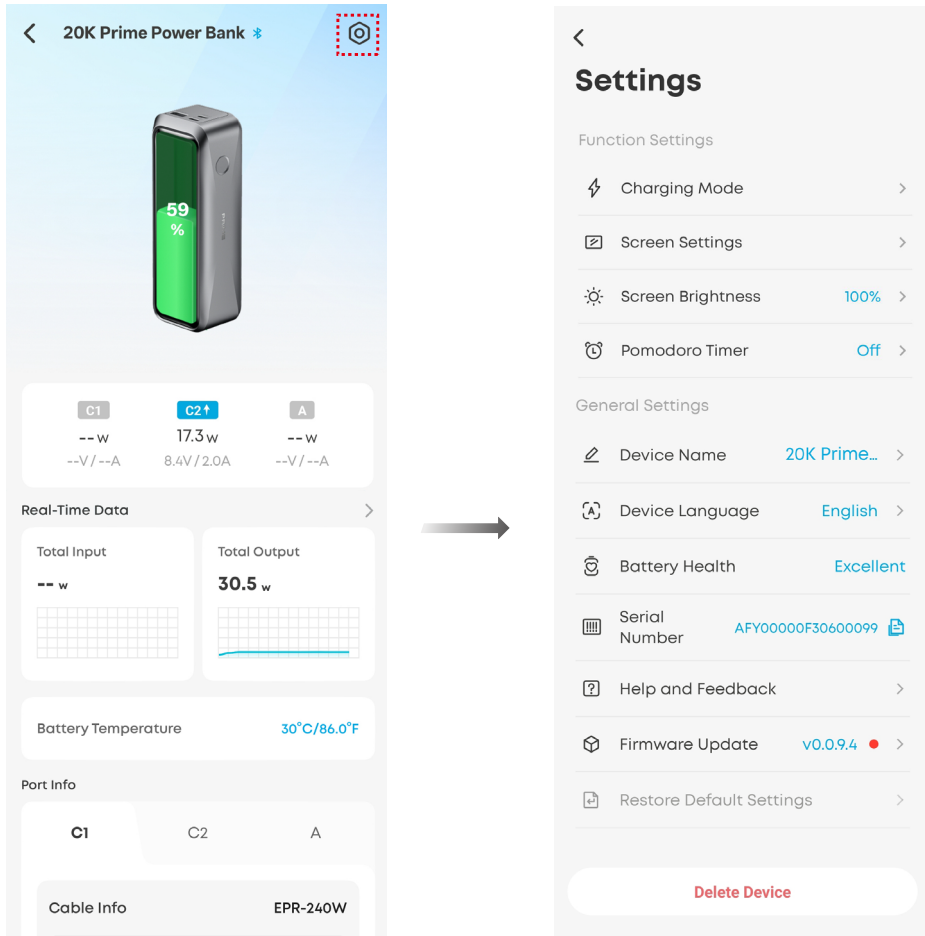


6. To reset Bluetooth, press and hold the button for 7 seconds. Then you can repeat the steps above to connect the power bank to a new phone or new app account.



Anker App Settings

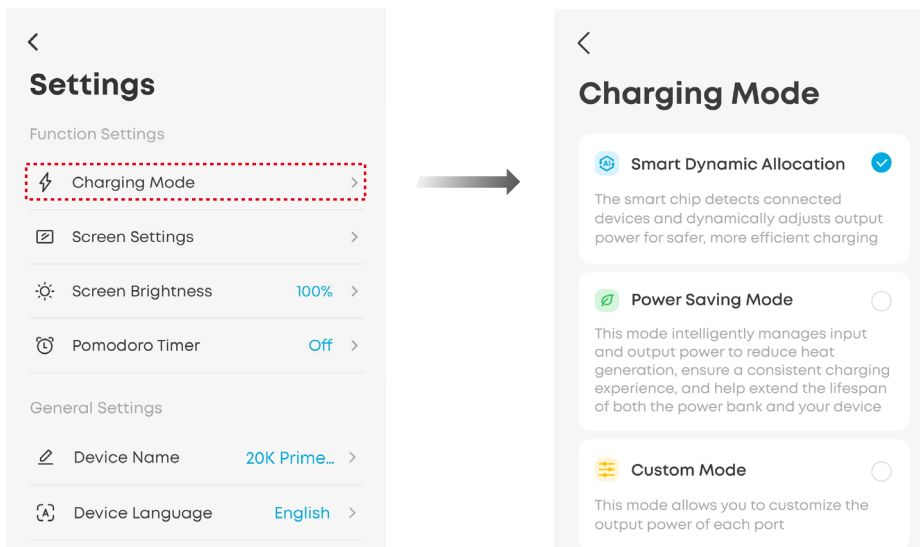
Tap the “Settings” icon in the top-right corner of the device page to view and modify detailed settings.



Charging Mode

Tap “Charging Mode” and select your preferred mode.

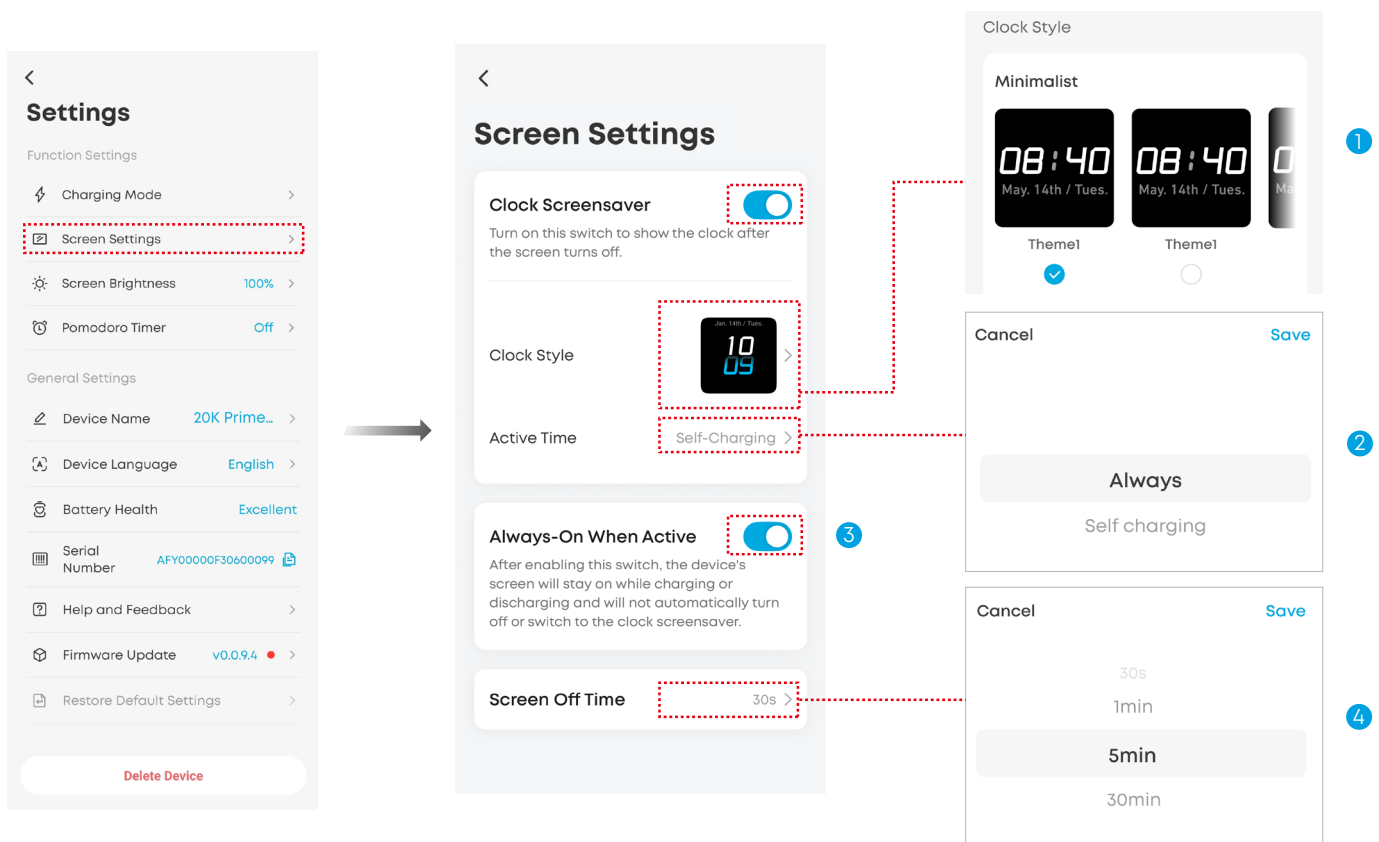
- Smart Dynamic Allocation: The power bank adjusts power output for optimal charging efficiency.
- Power Saving Mode: The power bank manages power input and output to reduce heat and extend battery lifespan.
- Custom Mode: Customize power distribution plans based on your own preferences.



Screen Settings

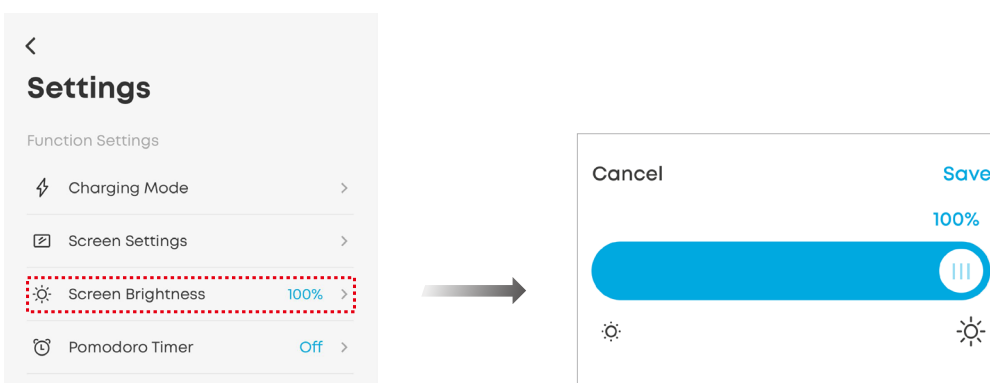
Tap “Screen Settings” and toggle on the first button. You can then configure the following settings:

- ① Clock Style: Select your preferred clock appearance.
- ② Effective Time:
 - If the effective time is set to “Always,” the screensaver remains active as long as the battery isn’t empty. Note that the power bank may increase power consumption and become slightly warm.
 - If the effective time is set to “Self Charging,” the screensaver is only active while the power bank is being recharged.
- ③ Always-On When Active: If you toggle on this button, the power bank screen will stay on during charging or self charging. The screen will not automatically turn off or switch to the screensaver. To turn off the screen manually, press and hold the power button for 2 seconds.
- ④ Screen Off Time: Once the screen timeout period ends, the display switches to the screensaver.



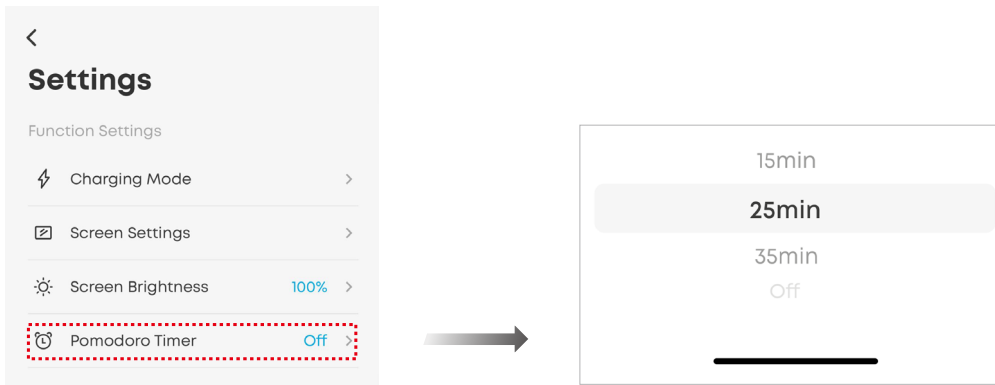
Screen Brightness

Tap “Screen Brightness” and slide the bar to adjust the display brightness of the power bank screen.



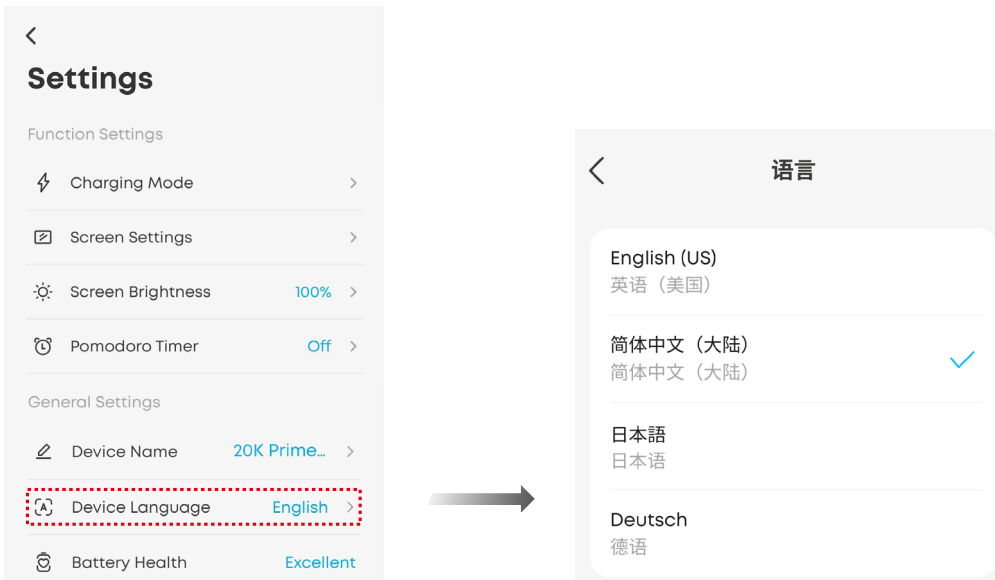
Pomodoro Timer

Tap “Pomodoro Timer” to change the countdown time or to turn the timer off.

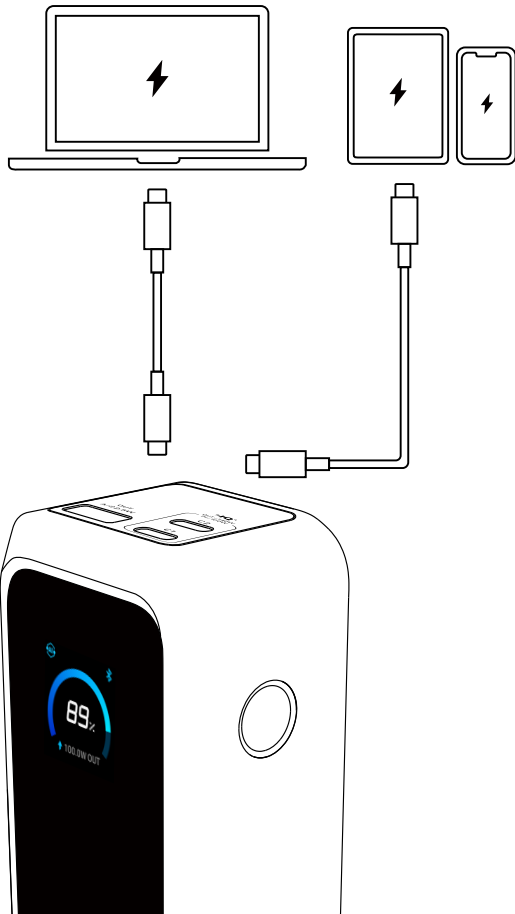





Device Language

Tap “Device Language” and choose your preferred language. The power bank screen supports four languages: English, German, Japanese, and Chinese.



Charging Your Devices

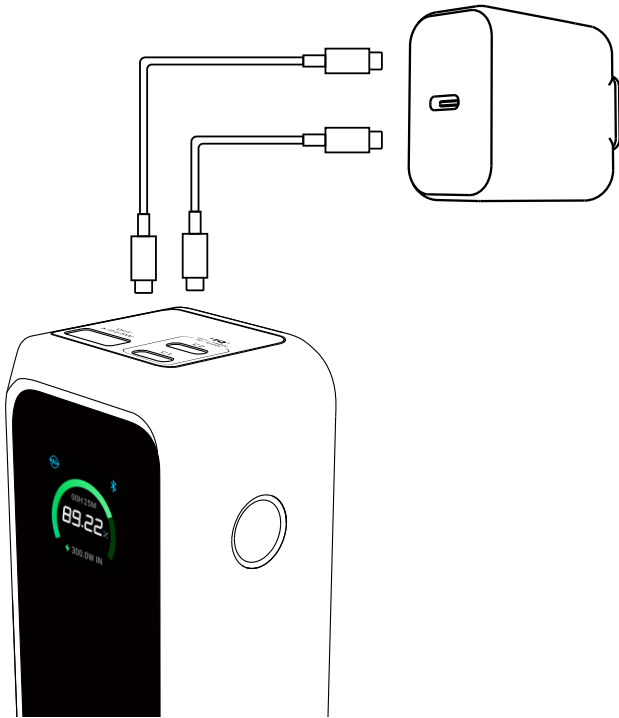


	USB Port Output Notice
	Turbo Mode Fast Charging Notice (Single-Port Use)
	Turbo Mode Fast Charging Notice (Multi-Port Use)

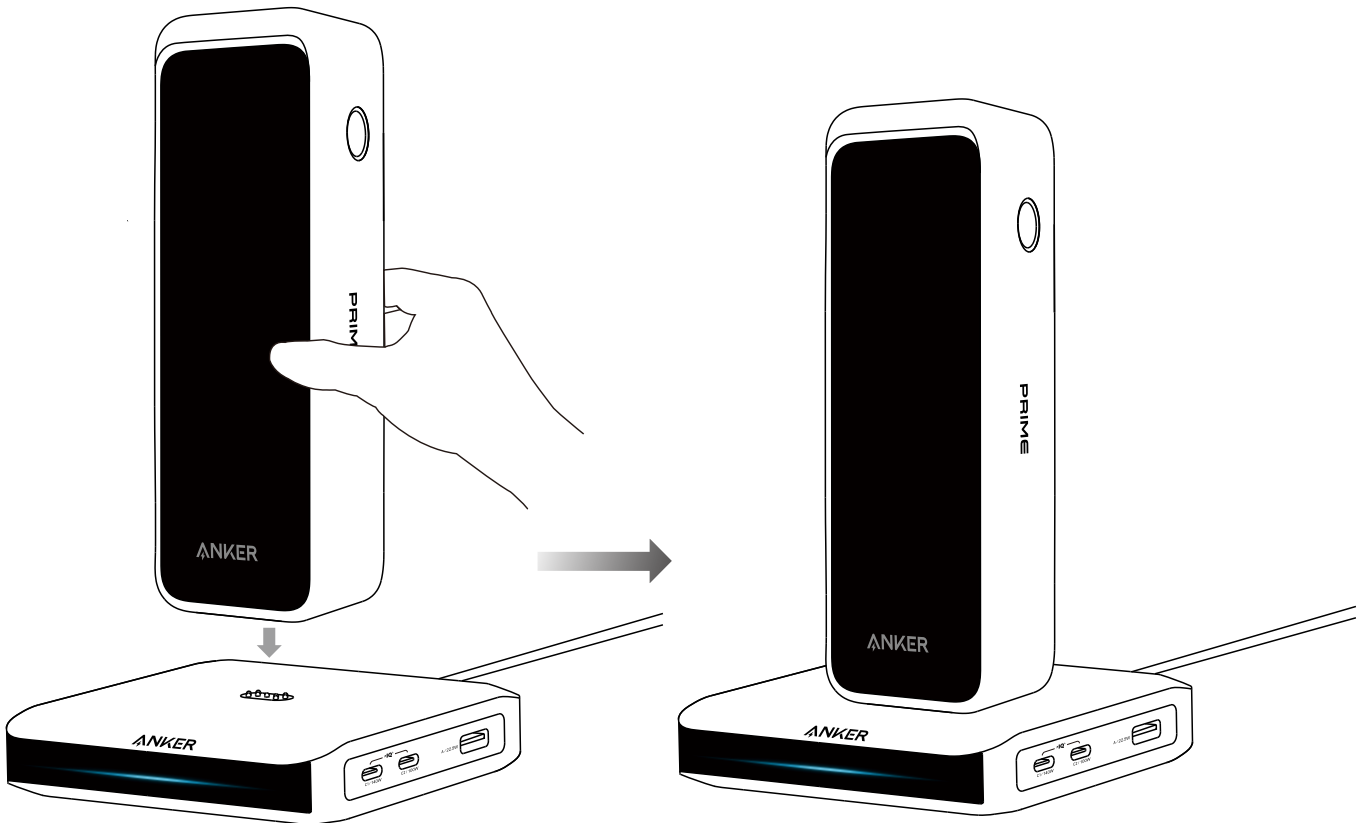
Recharging the Power Bank

Recharge the power bank via the USB-C ports.

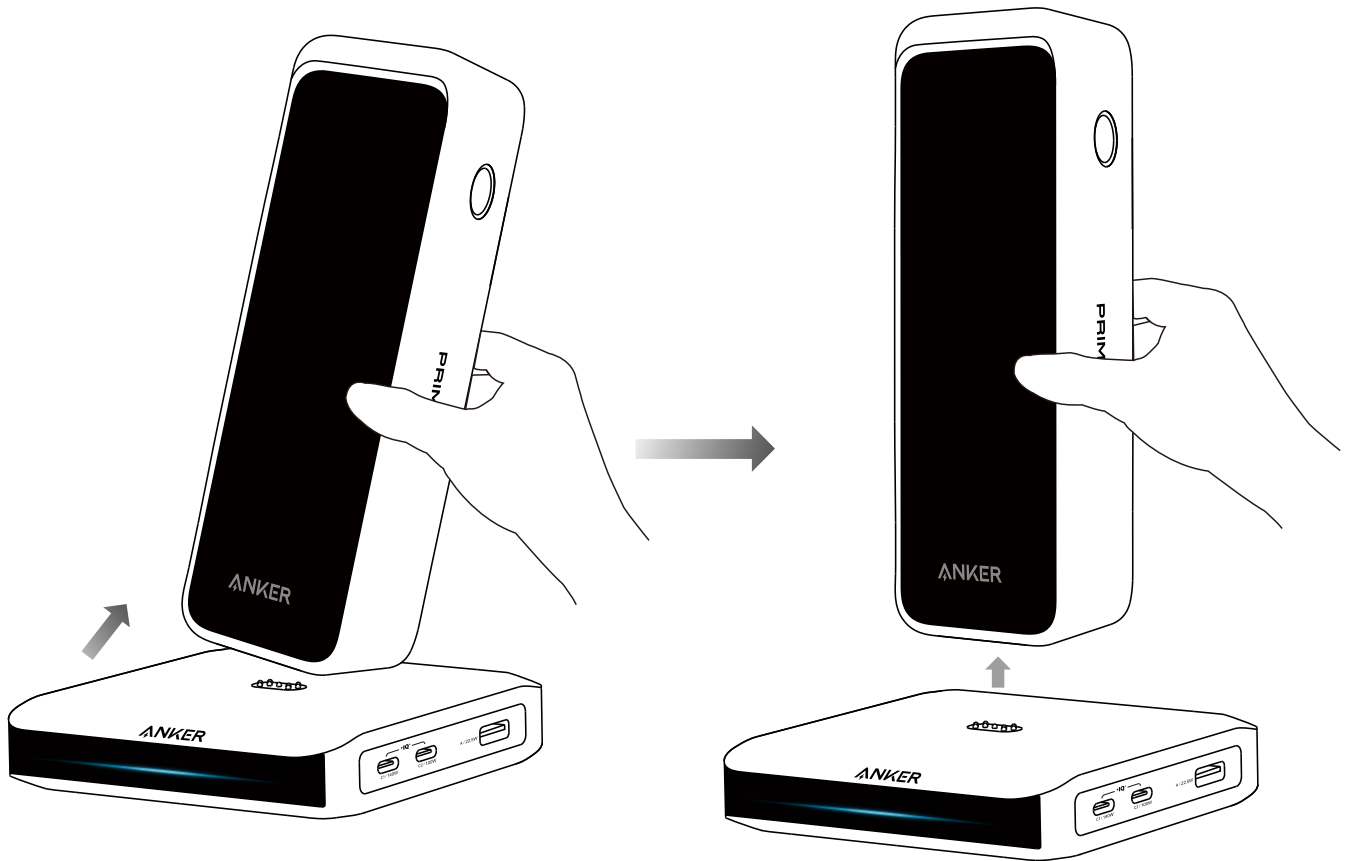
We recommend using a charger with at least 100W output. The power bank can fully recharge in about 1 hour with a 100W charger.






You can also recharge the power bank using an Anker Prime charging base. Align the bottom of the power bank with the Pogo Pin (charging connector), and place the power bank vertically on the base.



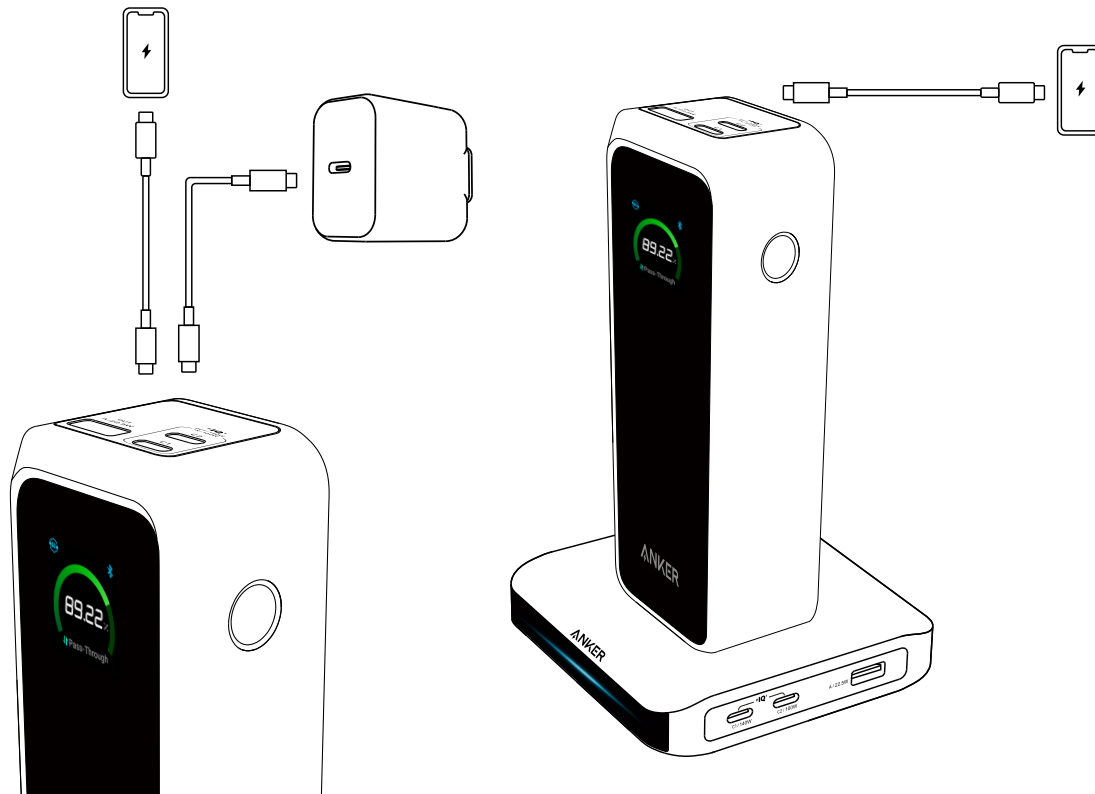
To remove the power bank, tilt it slightly backward and lift it up.



	USB-C Port Input Notice
 Dual-Port Fast Recharging	Dual-Port Input Notice (Note: Small current variations can cause slight differences between the two ports. It is normal for the two USB-C ports to show different input power.)
 Charging Base Fast Recharging	Charging Base Input Notice

Simultaneous Charging and Recharging

- When charging and recharging simultaneously, the power bank will pause recharging once it is fully recharged. Recharge will restart when the battery level drops to 90%.
- If the charger's power is too low (typically below 30W), output may pause to prevent the battery level from falling. We recommend using a charger with at least 100W, or pause recharging the power bank while it is powering other devices.
- The power bank cannot charge other devices while being recharged via Anker 100W Charging Base—Model A1902. This function is only supported when using Anker Prime Charging Base (150W, 3 Ports)—Model A1903.



In-App Combination of Charging Base and Power Banks

You can combine the following devices via the Anker app for more features. Each group can include one charging base and up to four power banks.

Charging Base	Power Bank
Anker Prime Charging Base (150W, 3 Ports)—Model A1903	Anker Prime Power Bank (26K, 300W)—Model A110A Anker Prime Power Bank (20K, 220W)—Model A110B

Note:

- Anker 100W Charging Base—Model A1902 does not support app connection.
- Power banks do not support Wi-Fi independently.

1. Before starting, ensure that the charging base and the power bank are added to your Anker app account, and that the charging base is properly connected to a Wi-Fi network.

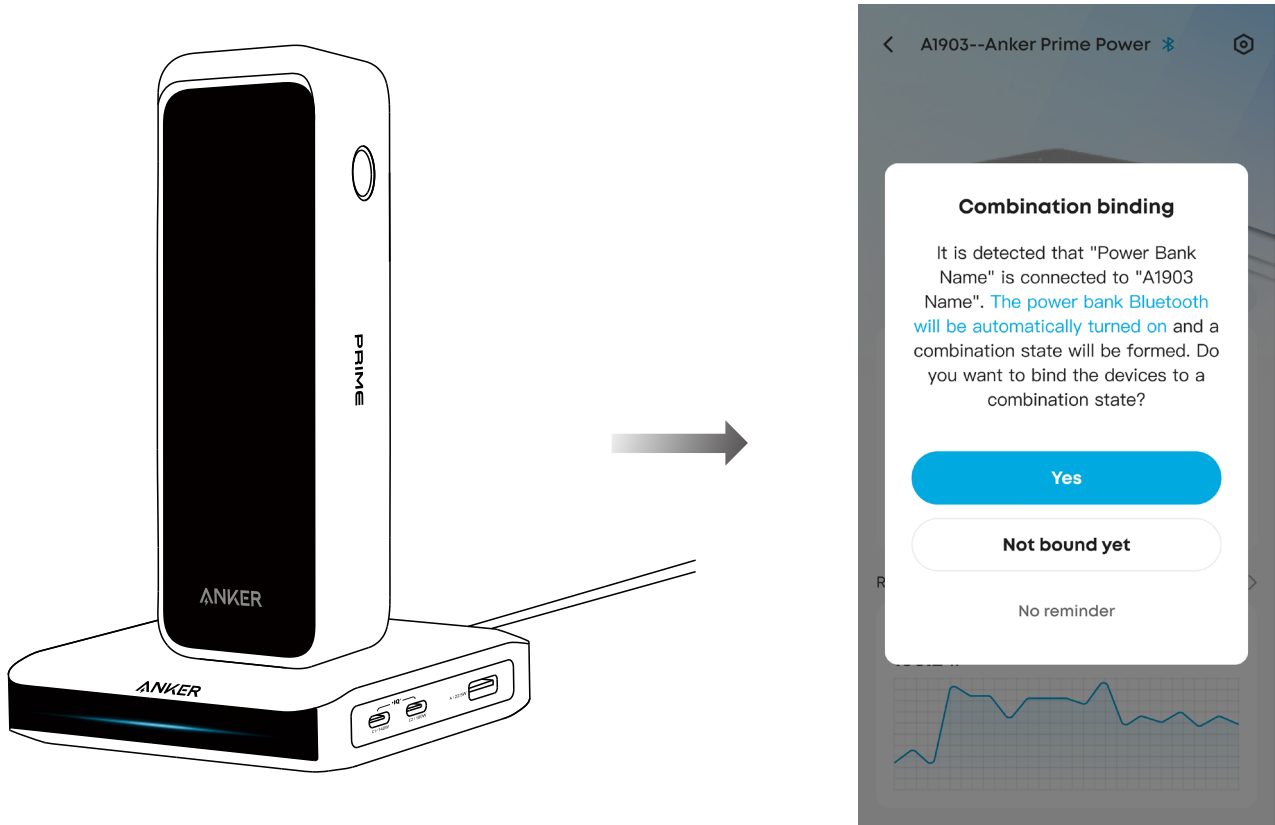
Check the user guide for A1903:

<https://support.anker.com/s/article/manual?pn=A1903>

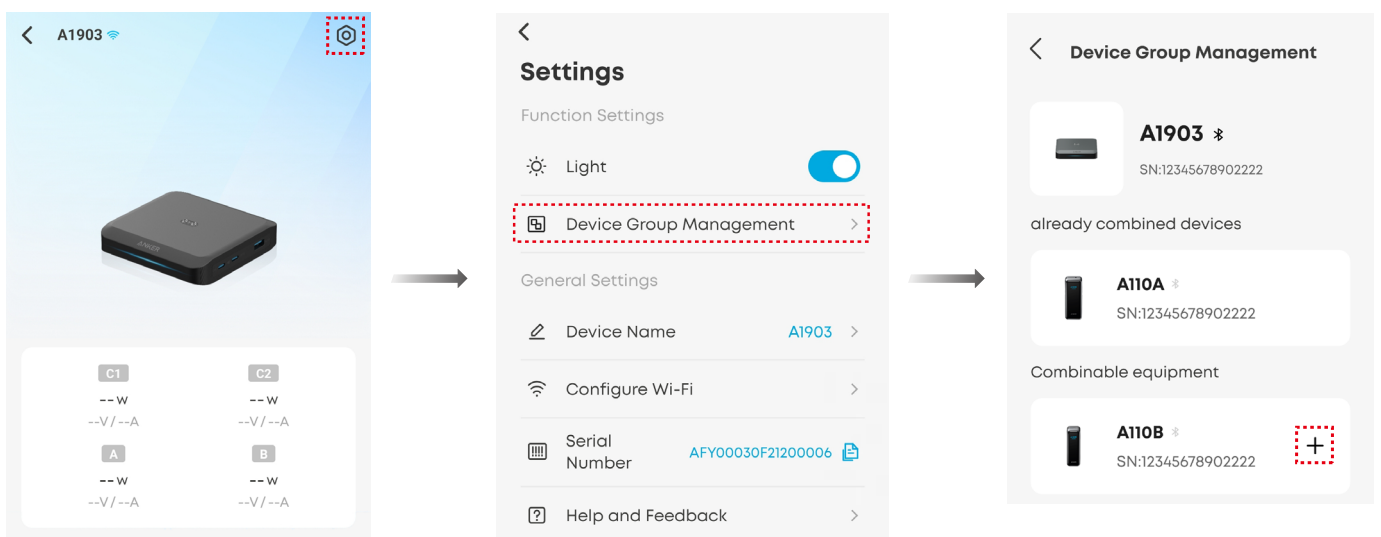
Wi-Fi connectivity allows you to:

- View real-time information about connected devices remotely.
- Automatically perform software and firmware updates overnight.
- Download new clock display styles for paired power banks.

2. Place the power bank vertically on the charging base, and a combination notice will appear in the Anker app. Confirm the notice to activate the power bank's Bluetooth and complete the binding process.

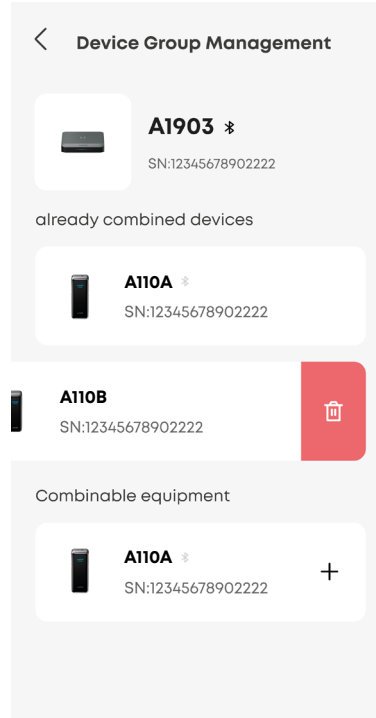
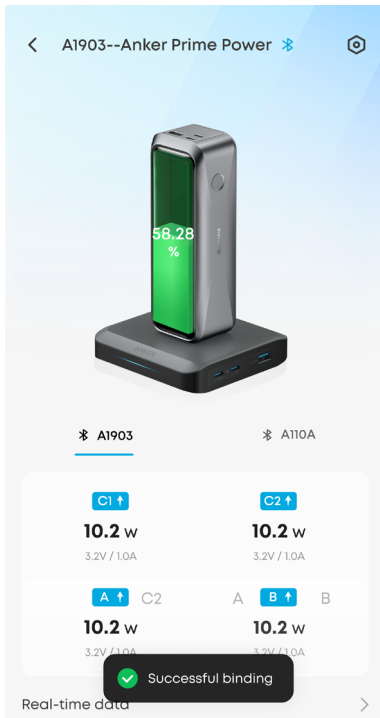


You can also tap the "Settings" icon in the top-right corner of the charging base page. Then tap "Device Group Management" to bind the power bank with the charging base.



3. After combination, you can monitor real-time charging data for all connected products. Each group can include one charging base and up to four power banks.

To remove a device, swipe left on its name and tap the trash can icon.

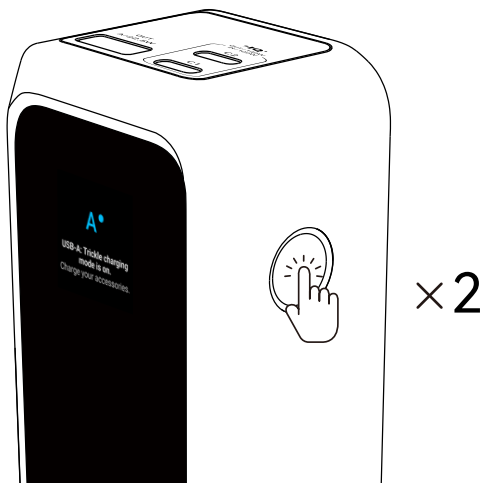


Trickle Charging Mode

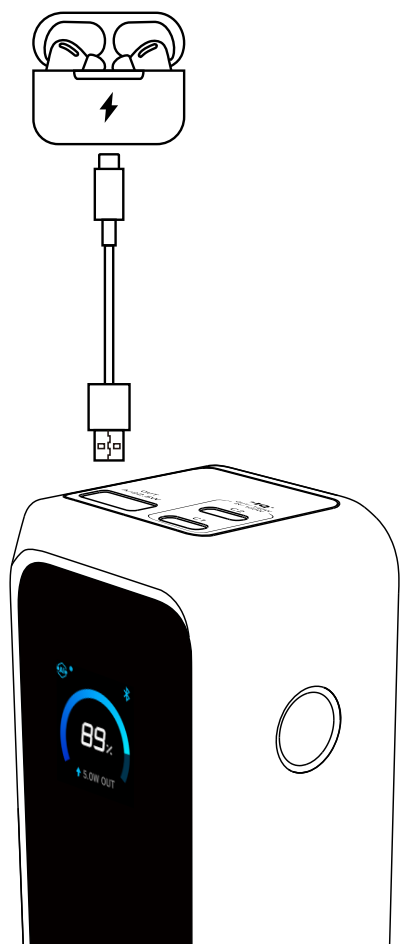
When you charge low-power devices such as earbuds or handheld fans via the USB-A port, activate trickle charging mode. This function, available on certain Anker power banks, provides a steady, low current to prevent the power bank from shutting off.

1. Press the power button twice to activate trickle charging mode.

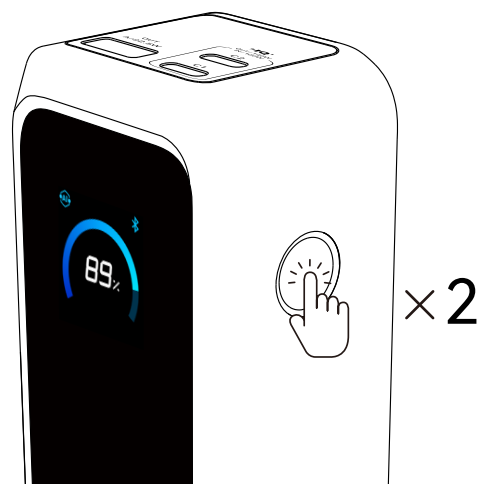
Note: Trickle charging mode can only be activated or deactivated on the main screen.



2. Charge your earbuds or other low-power devices via the USB-A port.

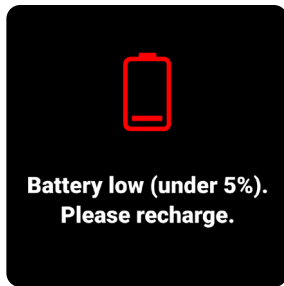


3. Press the power button twice to deactivate trickle charging mode. Trickle charging mode automatically turns off after 2 hours if the USB-A port is not in use.



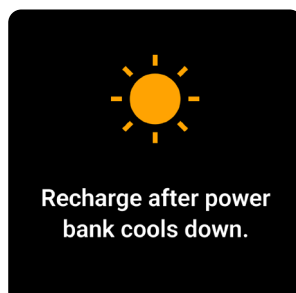
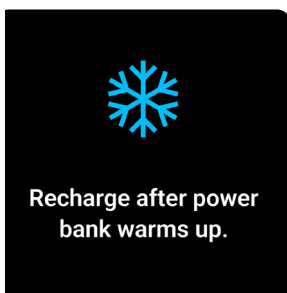
Other Screen Displays

Low Battery Alert



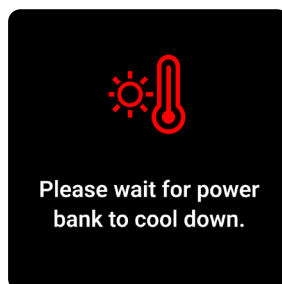
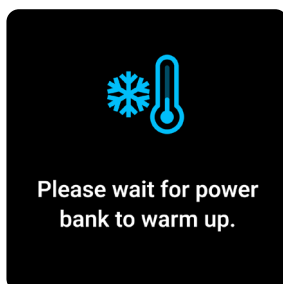
Non-Input Mode

Displayed when the battery temperature is relatively high or low. Recharging of the power bank is paused until the temperature returns to a safe range.



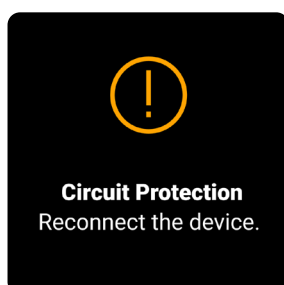
Temperature Protection Mode

Displayed when the battery temperature is too high or too low. All power bank functions are suspended until the temperature returns to a safe range.



Circuit Protection

Displayed when current or voltage irregularities are detected. Disconnect and reconnect the device to resume normal operation.



FAQ

Questions About the App

Do I need to log in to the Anker app account to use this product?

All product features can be used without logging in (tourist account). However, if you need to upload logs for troubleshooting, you must log in first.

What should I do if Bluetooth pairing fails?

When multiple Bluetooth devices are nearby, pairing may fail.

- Make sure Bluetooth is enabled on both your phone and this product, and place them close together.
- Move to an area with fewer Bluetooth devices and try again.
- Press and hold the button for 7 seconds to reset Bluetooth, then try again.

What should I do if the firmware update fails?

- Make sure the network connection is stable. Keep the product close to your phone and leave the Anker app open until the update finishes. The update process usually takes 7 to 10 minutes.
- Do not turn off Bluetooth, charge other devices or recharge the power bank during the process.
- If the update still fails, contact Anker customer support. You can also upload logs in the app's Settings menu to help the development team troubleshoot.

Questions About Charging and Recharging

Why does the power bank charge fewer times than expected?

Some energy loss (typically 30 - 45%) is normal during power conversion because of battery and circuitry design. After conversion, a fully charged 20,100 mAh power bank provides about 11,250 mAh to your devices.

Why can't the power bank reach maximum power when recharging?

- Make sure the charging cable supports 100W (5A). Use the included cable if possible.
- With third-party chargers, this product only supports maximum output under the PD protocol, not brand-specific proprietary protocols.
- Heating during charging is normal. To protect the battery and ensure safe charging, the power may be reduced after some time. Use the product in a cool, ventilated environment (32 - 77°F / 0 - 25°C) and avoid charging other devices while the power bank is recharging.

Why can't my power bank charge and recharge simultaneously?

- When charging and recharging simultaneously, the output power is about 70% to 80% of the input power. If the charger's power is too low (typically below 30W), it may not meet the minimum charging needs of high-power devices like laptops. We recommend using a charger with at least 100W, or pause recharging the power bank while it is powering other devices.
- When charging and recharging simultaneously, once the power bank is fully charged, it will stop recharging itself to protect the battery. Recharging resumes automatically when the battery level drops to about 90%.

Why won't the power bank recharge right after it is fully drained?

After heavy use, the battery cells may be too warm. Recharging will resume once the temperature drops to a safe level, protecting the battery lifespan.

Why do the two USB-C ports show different input power when recharging the power bank?

Small current variations can cause slight differences between the two ports. It does not affect normal use.

Why does charging slow down or stop before my phone is fully charged?

- iPhones may pause charging at 80% as part of iOS 17's thermal control strategy to protect battery health. This happens more often when the phone gets warm. Charging resumes once the phone cools down. Moving it to a cooler place may help.
- Some phones, such as iPhone or Samsung, pause charging at around 80% when battery optimization is turned on. Check your phone's battery settings to see if this feature is enabled.

Why does my MacBook show “Battery Is Not Charging” when connected to this product?

When a MacBook is connected to a third-party adapter, the charging status may update with a delay. Charging has already started, but the icon may not change right away. After several seconds, once the adapter is recognized, the plug icon will change to the charging icon.



Other Questions

Why does battery level drops when the power bank is not in use?

This product includes Bluetooth and a display screen. When both are active, power consumption becomes higher. To reduce power use, press the button twice on the Bluetooth screen to turn off Bluetooth, or set a screen timeout in the Anker app.

Why is the screensaver time inaccurate?

If the product has not been paired with your phone for a long time, the screensaver clock may become inaccurate. The time display may also be delayed after the product is powered off or restarted. To restore accurate time, connect the product to the Anker app via Bluetooth. The system will automatically sync synchronize standard time without needing manual input.

Is it normal for the power bank or connected devices to feel warm during charging?

Yes. It is normal for devices to generate heat during power transfer, especially during long charging sessions or when using your phone for gaming or video streaming. Devices with metal casings may feel warmer to the touch because they are designed to dissipate heat more efficiently. Use the product in a cool, well-ventilated place (32 - 77°F / 0 - 25°C) and pause use of devices that are charging.

Why do the readings on the charger screen differ from those on a power bank or third-party tool such as POWER-Z?

- Display differences are normal. Both chargers and power banks show readings with a slight delay.
- Each device measures power in a different place—at the charger output port, the battery cell, or the device input. Cable aging and transmission losses can also affect results.
- The power bank's display only shows one decimal place.

Specifications

Battery Energy	72.36Wh / 21.6VDC (3,350mAh, 6 Cells in Series)	
Input	Pogo Pin	15~25.2V = 5A (100W Max)
	USB-C1 / USB-C2	5V = 3A / 9V = 3A / 12V = 3A / 15V = 3A / 20V = 5A (100W Max)
Output	USB-C1 / USB-C2	5V = 3A / 9V = 3A / 10V = 2.25A / 12V = 3A / 15V = 3A / 20V = 5A / 28V = 5A (140W Max)
	USB-A	5V = 3A / 9V = 2A / 10V = 2.25A / 12V = 1.5A (22.5W Max)
	Total Output	220W Max

Default exposed network interfaces and services

BLE (Bluetooth Low Energy) Configuration

Status Description: When the device is not yet connected to a network, it will automatically enable BLE broadcasting and activate BLE services to provide Bluetooth network configuration capabilities.

Notes

During BLE configuration processes, please ensure your network environment is stable and follow the device's instructions to complete the setup.